

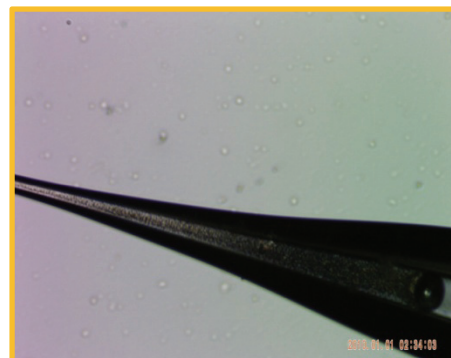
## **NEW! eFrit™**

### Fritted capillary for packing columns

- requires less run pressure,
- allows packing of longer columns and use of sub-3 micron particles while using a standard nanoLC pump.
- Embedded frit is positioned throughout the narrow-bore region of the laser-pulled tip to enable even packing, eliminating high pressure due to packing of particles into the constriction of the laser-pulled tip.
- Narrowest bore of the taper is packed with porous frit, delivering excellent spray characteristics with minimal clogging.

**PST-LC75-eFrit** 75 µm i.d. 360 µm o.d, 40-50 cm long capillaries for packing columns. Four Capillaries/box

**PST-eFrit-xxTip** xx = 20-25, 50 or 75 µm i.d, 360 µm o.d, 6.4 cm length nominal as nanospray emitters. Other lengths may be specified when ordering. Four emitters per box.



eFrit emitter with an embedded frit.

## Elite® Chromatographic resins and packed columns

Large collection of chromatographic particles

- High surface area, total coverage, fully endcapped
- Compatible with column heating. Resins are stable up to 100 °C
- 1.7 µm, 1.8 µm, 3 µm, 4 µm and 5 µm
- C18, C8, C4, HILIC and many more (Please see back page for the available phases)
- Packed columns with Elite resins are also available.
- Please contact us for more information

## SMT UHPLC - Columns

SMT SAM-UHPLC® columns are the most technologically advanced LC columns ever created, combining faster separations with higher resolution by harnessing the full potential of small particles. Designed, tested, and guaranteed for use in applications up to 15000 psi (1000 bar), these columns offer unsurpassed efficiency, ruggedness and throughput.

Perhaps the most important feature of UHPLC column is the tremendous savings in analytical time and solvent con-

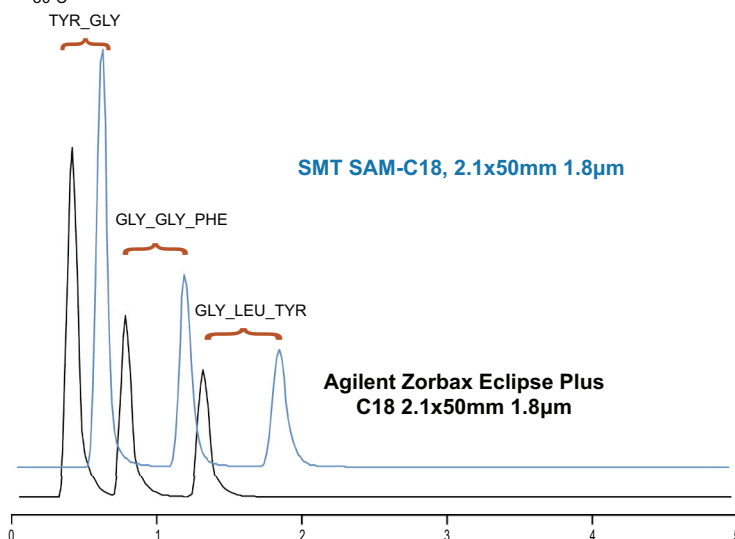
sumptions as well as cost of disposal of used solvents in analytical method development process.

SMT UHPLC columns are available in various bonded-phases (C18, C8, MEB, CN, NH<sub>2</sub>, Phenyl, Diol, etc.) and in more than 100 combinations of configurations, column dimensions, chemistries and offerings in:

- 1.5 µm UPLC particles
- 1.8 µm UPLC particles

### UHPLC Separation of Peptides

Column: OD-1.8-100/52 vs Agilent  
 Solutes: 1. TYR\_GLY  
 2. GLY\_GLY\_PHE  
 3. GLY\_LEU\_TYR  
 Eluent: ACN: Water 70:30 (v:v)  
 Flow: 0.10 mL/min  
 Detector: UV; 254nm  
 Temp: 30°C



Chromatographic data donated from Dr. Derrick Swinton,  
 Department of Chemistry, Lincoln University, PA

## Ordering Information

### SMT SAM-C18 - Columns 1.5 µm, 100Å

* Column Dimension (length x i.d.)	Catalog Number
20mmx4.6mm	OD-1.5-100/2
30mmx4.6mm	OD-1.5-100/3
50mmx4.6mm	OD-1.5-100/5
75mmx4.6mm	OD-1.5-100/7.5
100mmx4.6mm	OD-1.5-100/10
* Column Dimension (length x i.d.)	Catalog Number
20mmx2.1mm	OD-1.5-100/22
30mmx2.1mm	OD-1.5-100/32
50mmx2.1mm	OD-1.5-100/52
75mmx2.1mm	OD-1.5-100/7.52
100mmx2.1mm	OD-1.5-100/102

### SMT SAM-C18 - Columns 1.8 µm, 100Å

* Column Dimension (length x i.d.)	Catalog Number
20mmx4.6mm	OD-1.8-100/2
30mmx4.6mm	OD-1.8-100/3
50mmx4.6mm	OD-1.8-100/5
75mmx4.6mm	OD-1.8-100/7.5
100mmx4.6mm	OD-1.8-100/10
* Column Dimension (length x i.d.)	Catalog Number
20mmx2.1mm	OD-1.8-100/22
30mmx2.1mm	OD-1.8-100/32
50mmx2.1mm	OD-1.8-100/52
75mmx2.1mm	OD-1.8-100/7.52
100mmx2.1mm	OD-1.8-100/102

### SMT SAM-C8 - Columns 1.5 µm, 100Å

* Column Dimension (length x i.d.)	Catalog Number
20mmx4.6mm	O-1.5-100/2
30mmx4.6mm	O-1.5-100/3
50mmx4.6mm	O-1.5-100/5
75mmx4.6mm	O-1.5-100/7.5
100mmx4.6mm	O-1.5-100/10
* Column Dimension (length x i.d.)	Catalog Number
20mmx2.1mm	O-1.5-100/22
30mmx2.1mm	O-1.5-100/32
50mmx2.1mm	O-1.5-100/52
75mmx2.1mm	O-1.5-100/7.52
100mmx2.1mm	O-1.5-100/102

### SMT SAM-C8 - Columns 1.8 µm, 100Å

* Column Dimension (length x i.d.)	Catalog Number
20mmx4.6mm	O-1.8-100/2
30mmx4.6mm	O-1.8-100/3
50mmx4.6mm	O-1.8-100/5
75mmx4.6mm	O-1.8-100/7.5
100mmx4.6mm	O-1.8-100/10
* Column Dimension (length x i.d.)	Catalog Number
20mmx2.1mm	O-1.8-100/22
30mmx2.1mm	O-1.8-100/32
50mmx2.1mm	O-1.8-100/52
75mmx2.1mm	O-1.8-100/7.52
100mmx2.1mm	O-1.8-100/102

\*Guard column: available; add suffix G to Catalog Number  
 +Other dimensions available; Please contact SMT, Inc. for quotation