

Preview! Coming in 2016!

SureSpray™ nozzle spray emitters

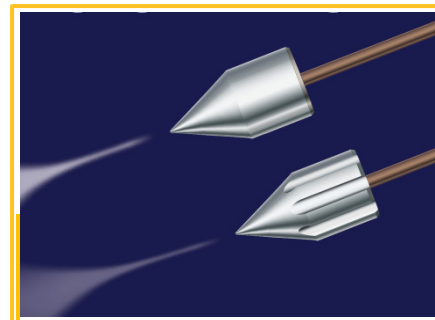
Non-clogging, robust nanospray – No more clogged tips to ruin analyses

- 20 µm i.d, 50 µm o.d.
- Forms liquid-tight junction with a 360 µm o.d. fused silica capillary without fittings
- When used with PST-polytip, the dead volume at the tip opening is < 2 nL.
- Large flow-rate range, <25 nL/minute to > 1 µL/minute for a single nozzle
- Patented plastic nozzle manufactured by ground-breaking micromolding technology
- Inert polypropylene and the relatively large nozzle opening minimizes molecular adsorption on the surface of the spray tip to prevent clogging
- Optimized shape for nanoLC-MS.
- The unmatched, superior spray quality of the plastic nozzle has been established with a previous-generation nozzle designed for direct infusion.
- Watch for product shipping date

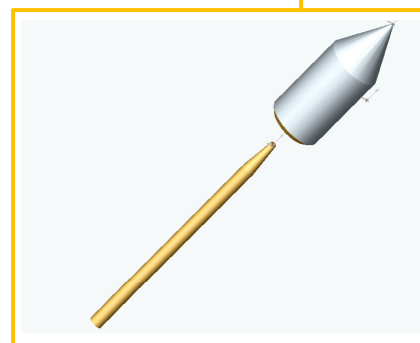
The Factor : SureSpray Chi® Xcapillary for nanoLC columns

- Revolutionary column designed to approach uPLC separation efficiency but require only conventional run pressures
- Two styles : Conventional integrated laser-pulled emitter tip and non-clogging SureSpray® nozzle as spray emitter (coming soon)
- Xfritted and prepped for packing your own columns with your favorite 3 - 5 µm particles
- Dramatically improve peak shapes and increase peptide ID
- Elite® resins with high surface area, total coverage, fully endcapped phases available, C4, C8, C18, etc. Compatible with column heating. Resins are stable up to 100 °C

PST-LXcap-xx – Xcapillary with laser-pulled emitter, xx= 75 or 100 µm, 4 Xcapillaries/pack



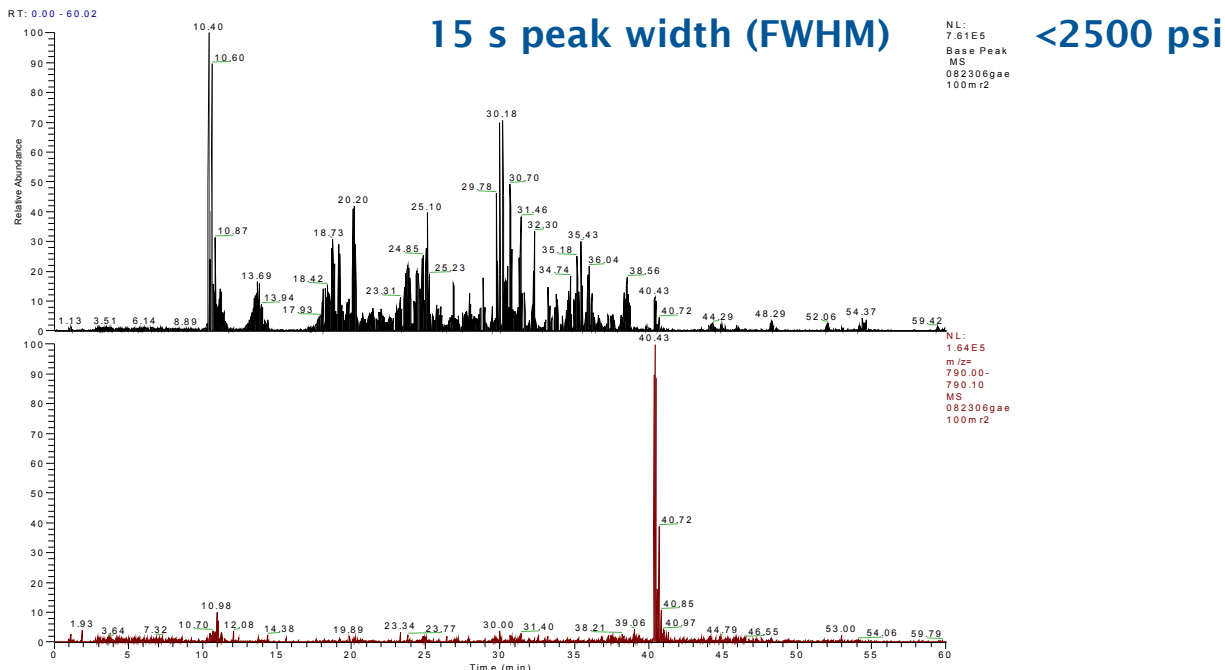
A PST-polytip coupled without a fitting to a SureSpray™ nozzle creates a robust, clog-free spray with negligible dead volume. Sheath gas can be used with the nozzle with sheath gas flow channels.



A SureSpray™ nanospray nozzle shown with a tapered fritted PST-polytip

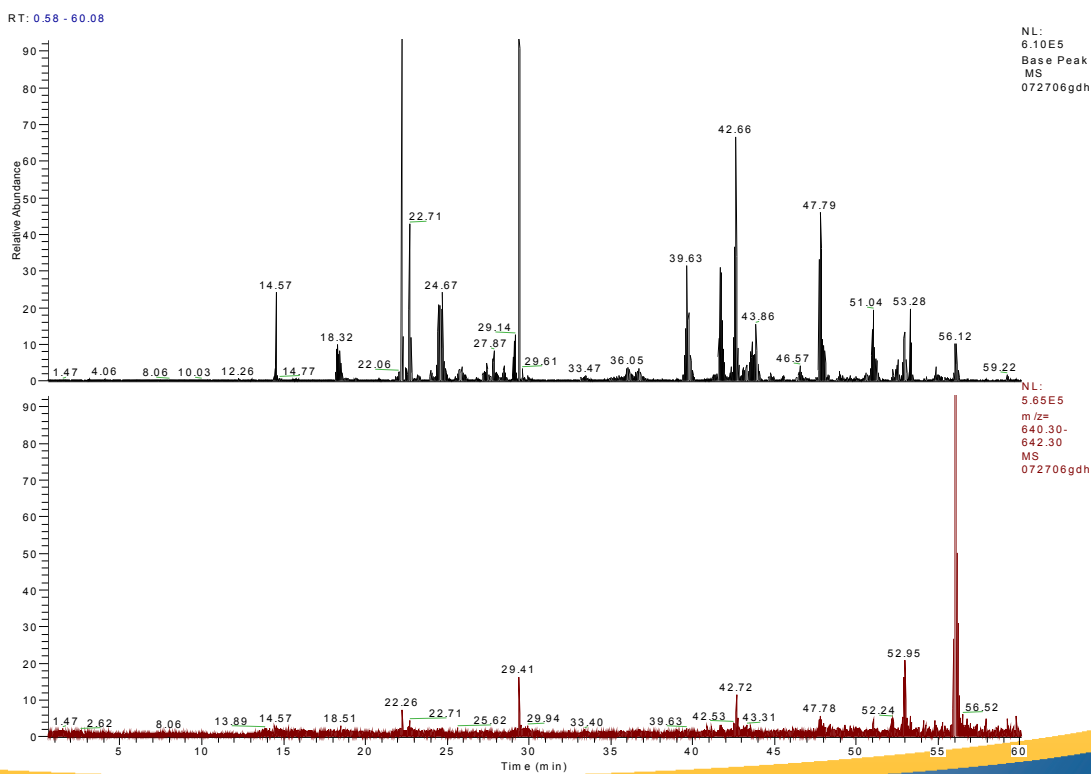
The Performance

20 cm 3 μm Agilent C18 particles packed into a 75 μm i.d. Xcapillary



20 cm 1.8 μm Agilent C18 particles, 75 μm i.d column

12 s peak width (FWHM) >7000 psi



Ordering Information:
(610) 876.6081 info@phoenix-st.com www.phoenix-st.com