

The pneumatic pneu-Nimbus NanoLC Source

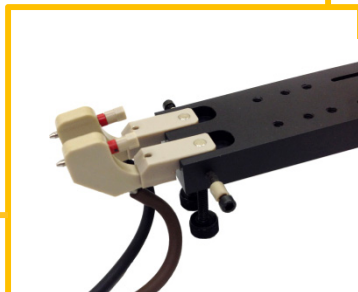
Dual-Column Benefits at Low-Cost



- New pneumatic-actuation of column switching utilizes the auxiliary gas output of the MS: no extra compressed air supply
- The magnetic dual-column rail is removable from the source for easy installation of columns at the bench
- Extra fine Z-spray emitter position adjustment, a second camera and a third spray-head for calibration are optional
- Highly effective for biological sample matrix analyses, e.g. proteomics, metabolomics, biomarker discovery and method development

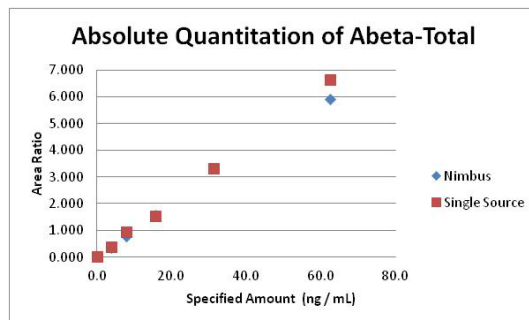


Magnetic column rail with cable-less HV connection enables columns of different lengths to be used in an analysis



Double your productivity Simply plug and spray - no new PC or software

- Substantially reduces carryover and improves data quality by washing the sample, column and emitter off-axis
- The high voltage for spraying is switched off for the off-axis column, eliminating any possibility for cross-talk
- On-board computer positions one column for analysis while performing off-axis loading, washing and equilibration on the second column
- Dual column automated system increases nano-LC throughput by up to 100%
- Proprietary Active Spray Control utilizes nitrogen to purge and clean the emitter



Calibration curve of total Amyloid beta from a serial dilution of a mixture of Abeta38, 40 and 42. Data was obtained with the Nimbus dual-column source and compared with a single column source (PST-MS Thermo) – same results in half the time.

We thank K. Mawuenyega, PhD, for the use of his data.

New!

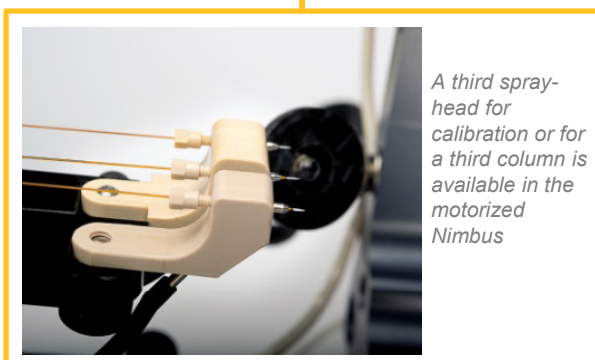
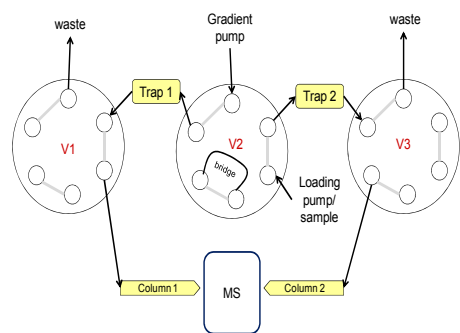
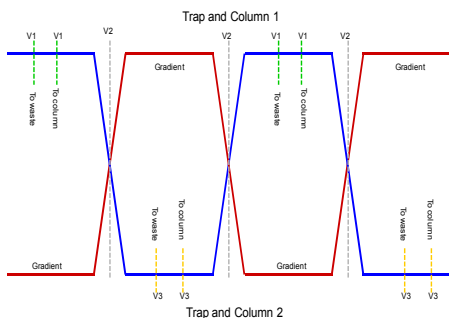
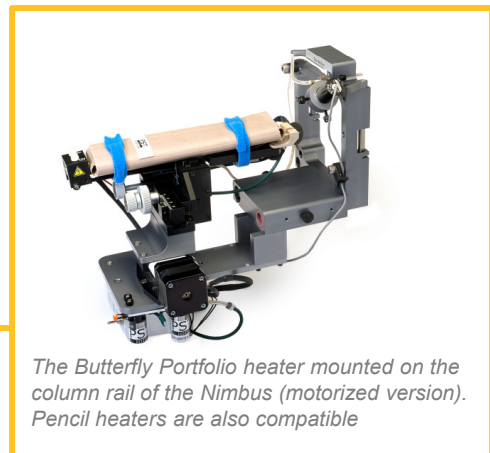
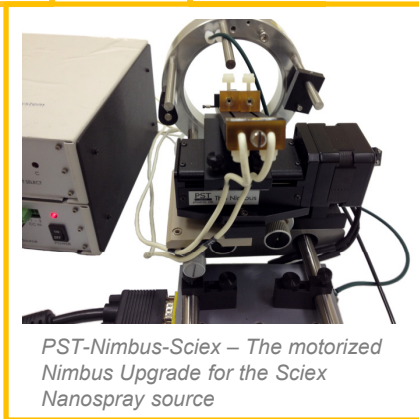
- Removable magnetic column rail is capable of on-axis and off-axis sprays
- Spray-heads with sheath gas are magnetically engaged and removable

The Nimbus NanoLC Dual Column System

Available in motorized and pneumatic column-switching modes

NEW Upgrade your Thermo and Sciex sources to Dual-Column

- Available as Upgrade to the Thermo Flexion and Sciex Nanospray I, II and III sources
- Easy to install: simply swap the column rail bracket
- Compatible with Phoenix S&T's column heaters
- Dual trap-analytical column analysis can be carried out with additional valves
- Compatible with a wide range of LC's
- Requires at least one gradient pump and one loading pump



Configuration and timing of the extra valves used in a dual-trap-analytical column analysis using the Nimbus