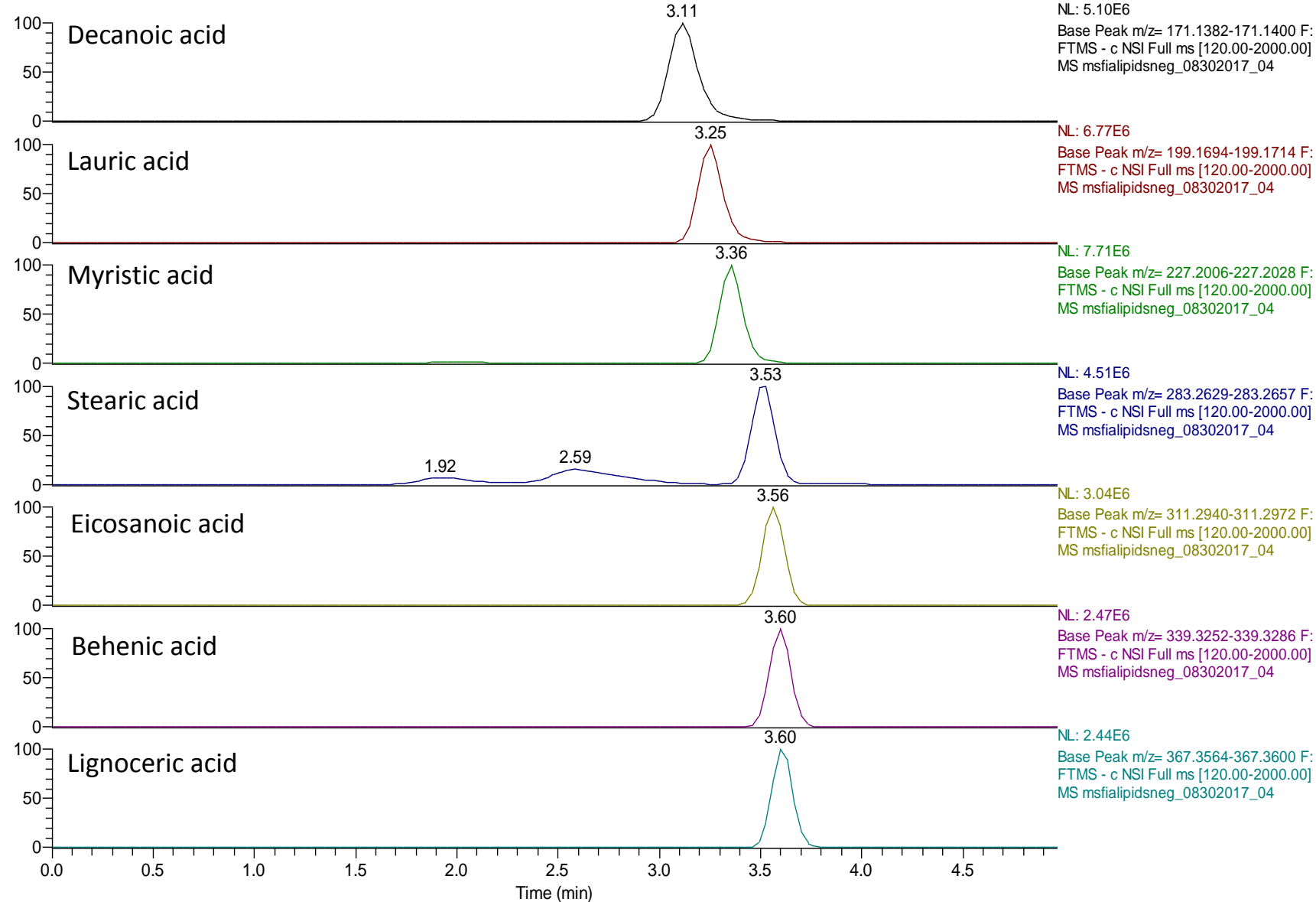


Reconstructed ion chromatograms of fatty acid by MicroSpray Negative capillary LC-MS

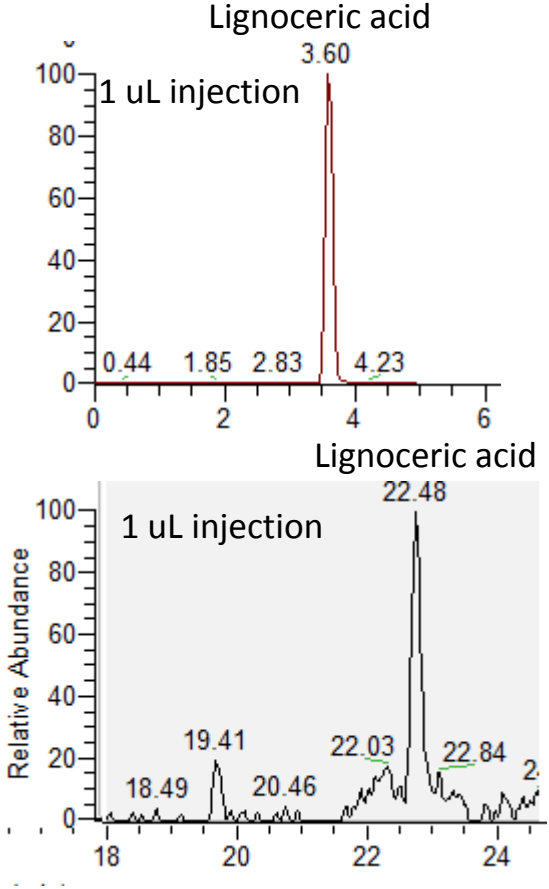
msfialipidsneg_08302017_04
FA stds

8/30/2017 2:52:46 PM

RT: 0.00 - 4.97 SM: 7G



Comparing analysis by Negative MicroSpray capillary LC-MS (top) and Negative Narrowbore LC-MS



Detection of 3 different phospholipids in cell extract by Positive MicroSpray capillary LC-MS

MSNegcapLCMS09012017_01

9/1/2017 8:59:41 AM

(1) Vehicle unstained 8-9-17 1:1 mix of 2:1 MTBE:MeOH + MeOH [1:1]

RT: 0.00 - 34.98 SM: 7G

