

```

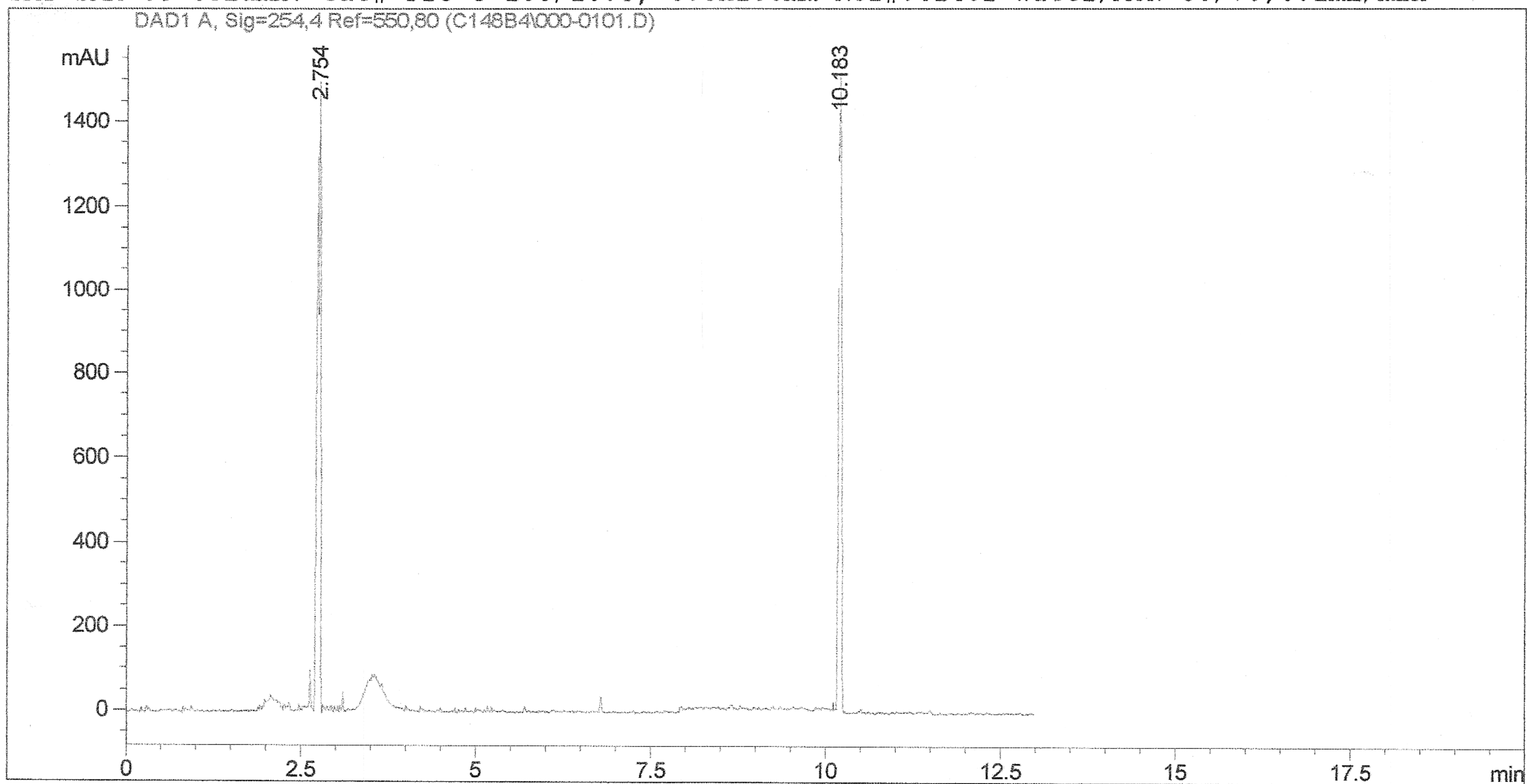
=====
Injection Date   : 2/11/2018 2:35:24 PM           Seq. Line :    1
Sample Name     : test solutes                   Location  : Vial 0
Acq. Operator   : Tony                          Inj       :    1
                                                    Inj Volume: 0.1 µl

Acq. Method     : C:\HPCHEM\1\METHODS\PRO1.M
Last changed    : 2/11/2018 2:46:48 PM by Tony
                  (modified after loading)
Analysis Method : C:\HPCHEM\1\METHODS\PRO1.M
Last changed    : 3/8/2018 7:17:17 PM by Tony
                  (modified after loading)

```

Test solutes: 1=Uracil,2=Anthracene

SMT SAM-C3 Column: Cat# Pro-3-100/10.3, 0.3x100mm Ref#:C148B Water/ACN 30/70;0.1mL/min



```

=====
Area Percent Report with Performance
=====

```

```

Multiplier      : 1.0000
Dilution        : 1.0000

```

Signal 1: DAD1 A, Sig=254,4 Ref=550,80
Results obtained with enhanced integrator!

RetTime [min]	k'	Area [mAU*s]	Height [mAU]	Symm.	Width [min]	Plates	Resol	Select
							ution	ivity
2.754	-	2149.29248	1502.06628	0.76	0.0243	70930	-	-
10.183	-	1398.44031	1436.90088	46.55	0.0160	2243785	2e2	3.70

```

=====
*** End of Report ***

```