

## On-line NanoLC-MS and Off-line Nanospray Source Upgrades

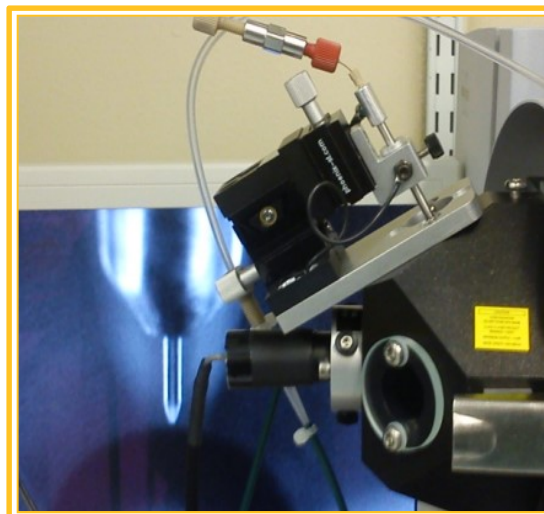
### For the Bruker mass spectrometers

- Superior sensitivity, precision and flexibility
- Easy to install and use
- Nanospray and microspray with sheath gas
- Off-line nanospray holder
- Integrated column heater for heating the column or the static nanospray glass tube
- Camera and spray imaging system
- Affordable

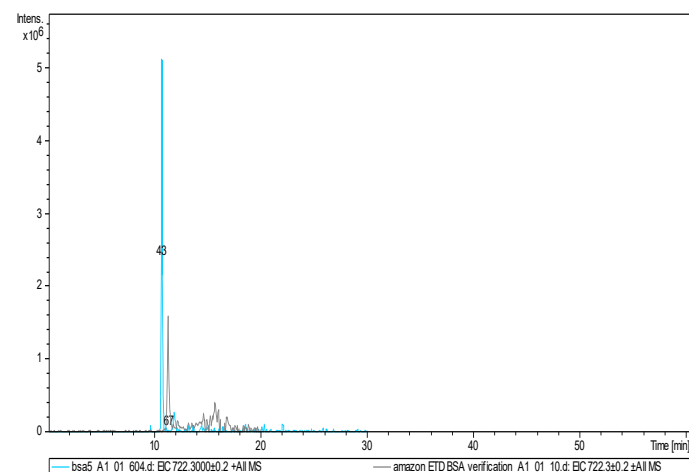
#### Model numbers:

**PST-MS-PROBE** Nanospray probe insert for nanoLC-MS for the Bruker Daltonics' MS

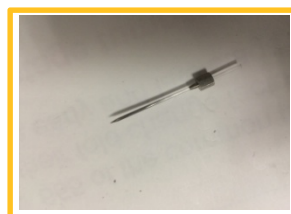
**PST-MS-PROBE-C** : online and off-line nanospray probe for the Bruker MS with integrated column heater



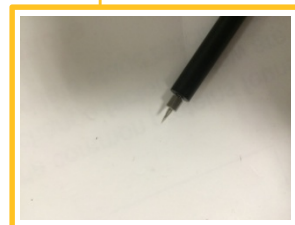
*PST-MS-Probe installed on a Bruker Amazon ETD with camera and light imaging system. The probe does not have the built-in heater or the off-line nanospray adapter.*



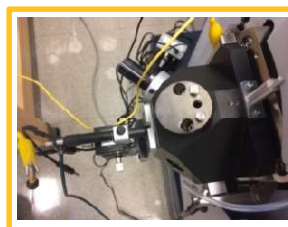
*5 fmol BSA PST-MS-BD vs 5 fmol BSA Bruker NSI . We thank Dr. Mike Myers of ICGEB for sharing the data.*



*Slide off-line nanospray glass tube with sample adapter cap for static nanospray*



*Install the probe end adapter onto the nanospray probe.*



*The complete nanospray probe as installed in the Apollo source.*



*Insert the probe into the 3-D positioner and adjust the tip position from the MS inlet*