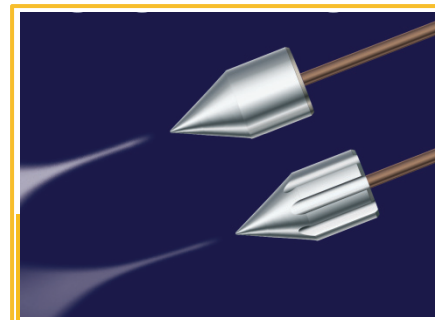


SureSpray™ nozzle spray emitters

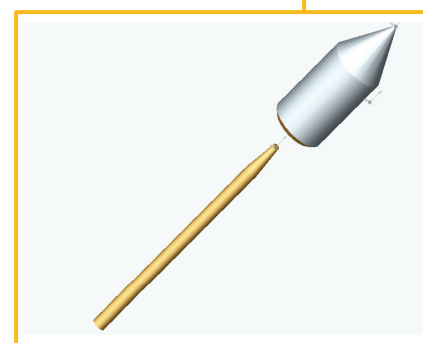
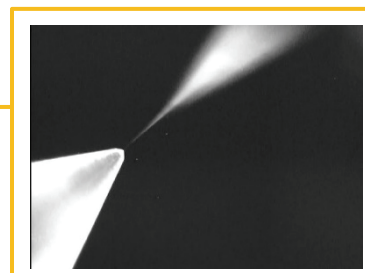
The Niebelizer : Available Now!

Non-clogging, robust nanospray – No more clogged tips to ruin analyses

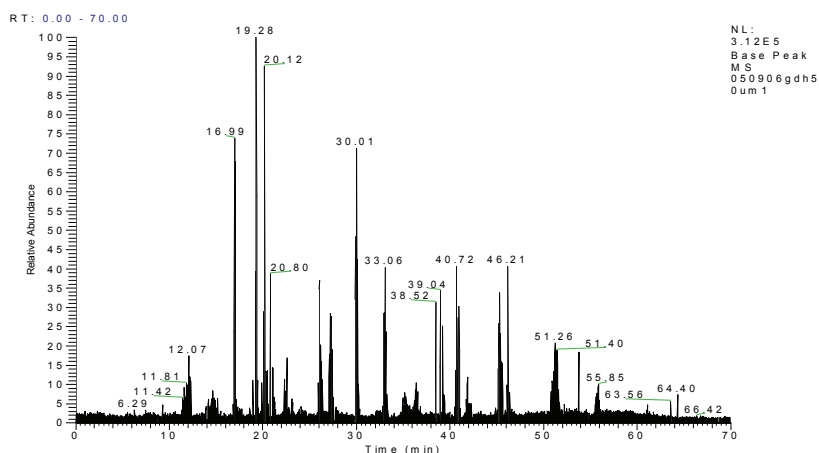
- 20 µm i.d, 50 µm o.d.
- Forms liquid-tight junction with a 360 µm o.d. fused silica capillary without fittings
- When used with PST-polytip, the dead volume at the tip opening is < 10 nL.
- Large flow-rate range, <25 nL/minute to > 1 µL/minute for a single nozzle
- Patented plastic nozzle manufactured by ground-breaking micromolding technology
- Inert polypropylene and the relatively large nozzle opening minimizes molecular adsorption on the surface of the spray tip to prevent clogging
- Optimized shape for nanoLC-MS.
- The unmatched, superior spray quality of the plastic nozzle has been established with a previous-generation nozzle designed for direct infusion.
- Watch for product shipping date



A PST-polytip coupled without a fitting to a SureSpray™ nozzle creates a robust, clog-free spray with negligible dead volume. Sheath gas can be used with the nozzle with sheath gas flow channels.



A SureSpray™ nanospray nozzle shown with a tapered fritted PST-polytip



50 fmol GDH Digest

50 µm x 10 cm Phoenix Nozzle (3 µm C18; 250 nl/min)

153 Matched Peptides (46 Unique), 50% Coverage

We thank M. Myers, PhD, for the use of the data.

Ordering Information:

(610) 876.6081 info@phoenix-st.com www.phoenix-st.com

Fused silica capillary nanospray emitters

PST-seTip

laser-pulled, then HF-etched fused-silica capillary tips

Robust, clog-resistant

The fused silica capillary emitters are first laser-pulled and then etched with HF.

The etching process:

- Opens the narrowed region of the conventional laser-pulled emitter.
- Eliminates the stressed parts of the tip opening due to the laser-pulling process.
- The resulted emitter is more clog-resistant and robust than the conventional emitters

The i.d.'s of the emitters may be 20 μm , 25 μm , 50 μm and 75 μm . The o.d. is 360 μm for all.

The spray voltage range is from 1 to 2.5 KV

Metalized (gold-coated, tip opening region only) emitters are also available.

Model number:

PST-seTip- X -Y

PST-seg-Tip-X-Y –gold coated emitter

X = 20 μm , 50 μm , 75 μm . Please contact us for custom i.d.'s such as 25 μm , 100 μm , etc.

Y = 5 cm, 10, cm 12 cm. Custom lengths such as 15 cm and longer for column packing are available.



PST-seTip-20, 1.8 KV MeOH