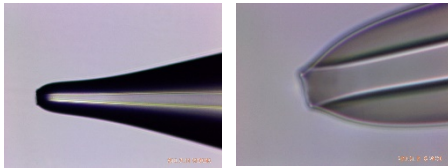


Unmatched Sensitivity, Clog-resistant Microspray Emitters for Metabolic Profiling

PST-seTip – Laser-pulled fused silica emitter

- High sensitivity cone-jet mode spray over an extremely wide flow-rate range: from 100 nanoliters/min to 20 μ L/min – suitable for both nanospray and microspray



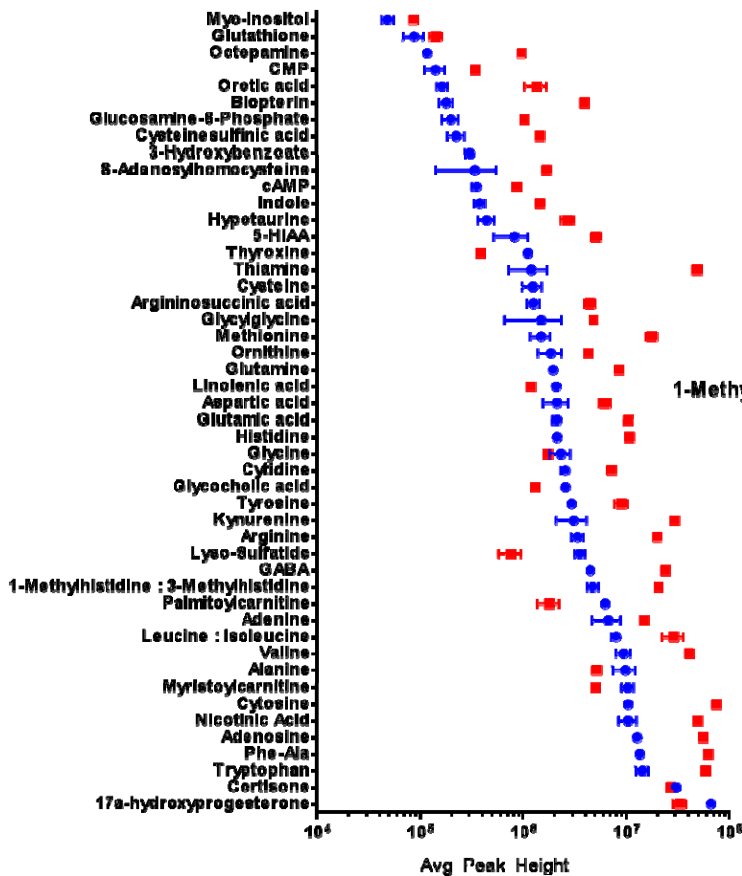
- At 20 μ L/min, 3x higher sensitivity than the Thermo HESI capillary ESI source. At 5 μ L/min, nanospray sensitivity is approached.

- Strong, stubby laser-pulled fused silica emitter running at up to 20 μ L/min.

Comparing HESI source with Jailbreak 2.0 (logarithmic scale)

Metabolite standard: in Water

in 25x Diluted Plasma Comparison

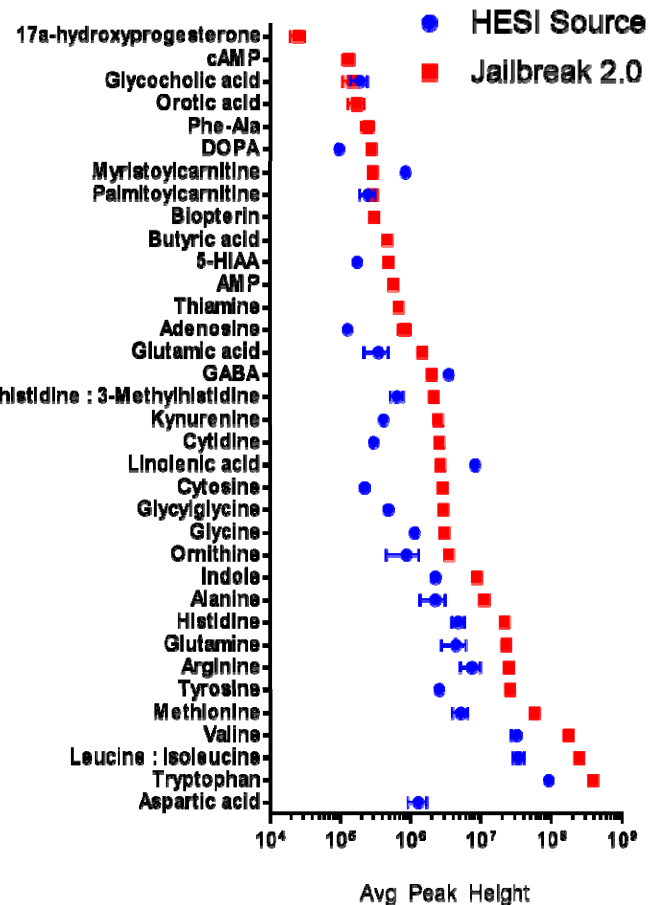


Log₂ Fold Change Range: -2.9 to 6.0

Average Log₂ Fold Change: 1.76

*When present in both sample sets

We thank Sarah Geller, of Sanofi-Genzyme for providing the data.



Data is sorted based on HESI results

PST-seTip-25-xx, xx= 5 or 9.8 cm

PST-seTip-50-xx, xx=5 or 9.8 cm

Ordering Information:

(610) 876.6081 info@phoenix-st.com www.phoenix-st.com