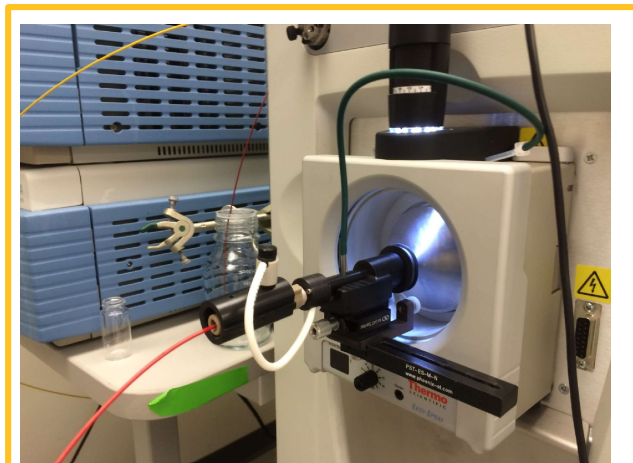
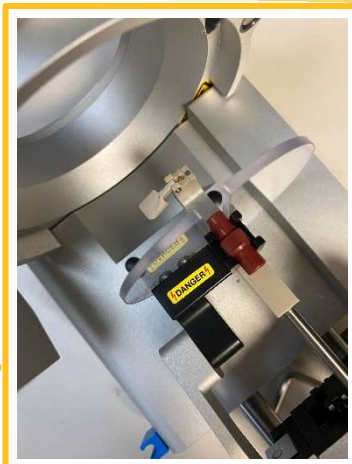


## Microspray Inserts : high sensitivity without the hassle

**PST-ES-M-N for the Easyspray source**

**PST-CH-M-N for the NanoFlex sources**

**Better Faster Cheaper**



Microspray-nanospray source Insert for any column for the Thermo Easy-Spray source (Jailbreak 2.0) or the NanoFlex source:

Includes:

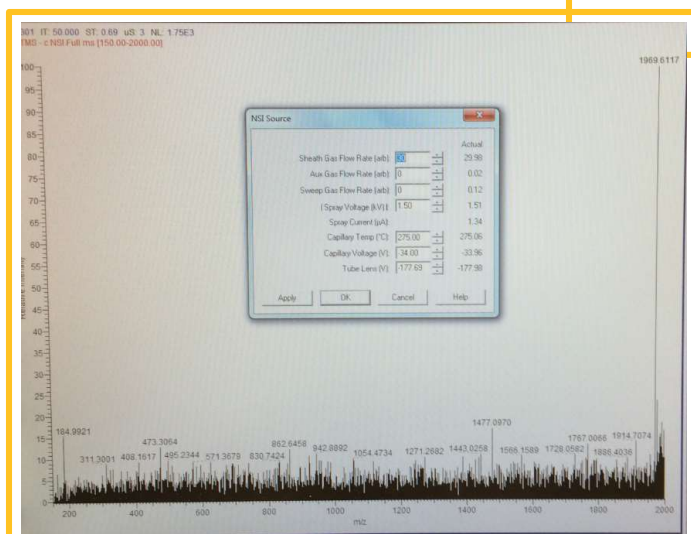
- No-hassle installation of the insert on existing features of the sources
- Sheath gas conversion kit
- Source insert with adjustable sheath gas nozzle to optimize the distance between the sheath gas outlet and the spray emitter opening
- For the Easyspray source, available for ordering are additional source inserts for various designated applications: calibration, microLC/MS, direct infusion, etc.

**Model numbers: PST-ES-M-N, PST-CH-M-N**

**New!** laser-pulled fused silica emitters for microspray

- Mechanically strong, stubby Laser-pulled fused silica o sprays sub- $\mu\text{L}/\text{min}$  to  $20 \mu\text{L}/\text{min}$
- Negative and Positive ion sprays are equally stable and robust
- Entire range of buffer compositions from 100% aqueous to 100% organic
- Plug and Play in the Thermo nanospray sources
- Clog-resistant because of the very short portion of the emitter tip with a constricted i.d.
- Sheath-gas capable

**Model numbers: PST-seTip—xx-mn, xx=25, 50 or 75  $\mu\text{m}$  i.d.**



Direct Infusion :5  $\mu\text{L}/\text{min}$ , -1.5 KV  
2 ng/ml Large oligonucleotide (multiply charged) in water and 3% ammonium acetate

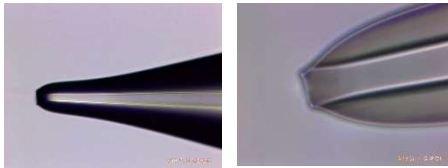
We thank H-K Lim, PhD, of the Janssen Research Lab, Johnson & Johnson, Springhouse, PA for collaboration and the permission to use the data and picture.

The Easy Spray source and the NanoFlex source are Thermo products.

## Unmatched Sensitivity, Clog-resistant Microspray Emitters for Metabolic Profiling

### PST-seTip – Laser-pulled fused silica emitter

- High sensitivity cone-jet mode spray over an extremely wide flow-rate range: from 100 nanoliters/min to 20  $\mu$ L/min – suitable for both nanospray and microspray



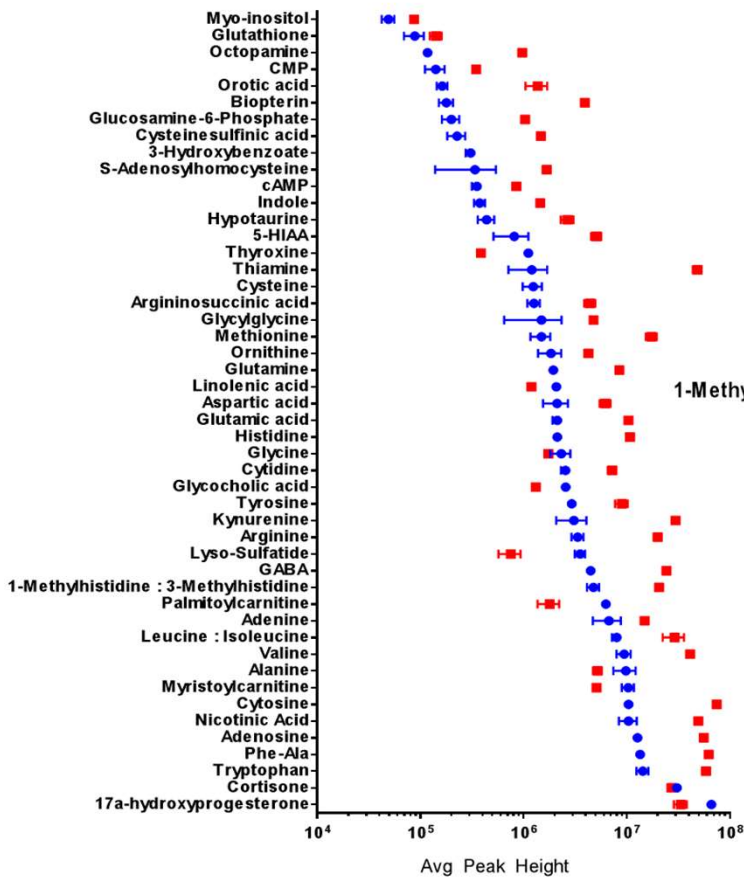
- At 20  $\mu$ L/min, 3x higher sensitivity than the Thermo HESI capillary ESI source. At 5  $\mu$ L/min, nanospray sensitivity is approached.

- Strong, stubby laser-pulled fused silica emitter running at up to 20  $\mu$ L/min.

### Comparing HESI source with Jailbreak 2.0 (logarithmic scale)

Metabolite standard: in Water

in 25x Diluted Plasma Comparison

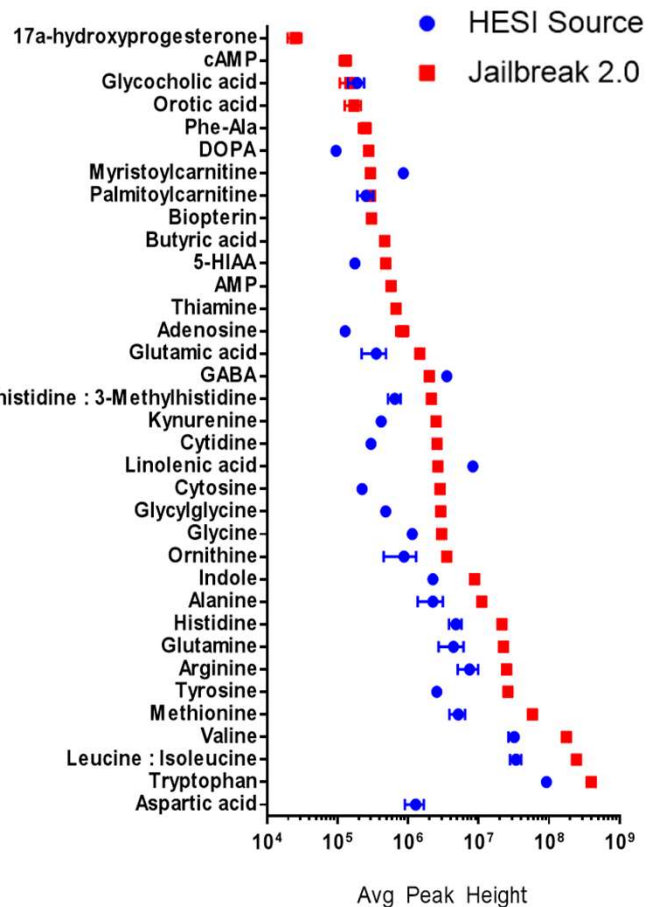


Log<sub>2</sub> Fold Change Range: -2.9 to 6.0

Average Log<sub>2</sub> Fold Change: 1.76

\*When present in both sample sets

We thank Sarah Geller, of Sanofi-Genzyme for providing the data.



Data is sorted based on HESI results

PST-seTip-25-xx, xx= 5 or 9.8 cm

PST-seTip-50-xx, xx=5 or 9.8 cm

Ordering Information:

(610) 876.6081 info@phoenix-st.com www.phoenix-st.com